

INSTALLATION INSTRUCTIONS

Front Control Arm Bushing Replacement (cast steel arms) Front Wheel Drive 1991-95, Chrysler, Dodge, Plymouth

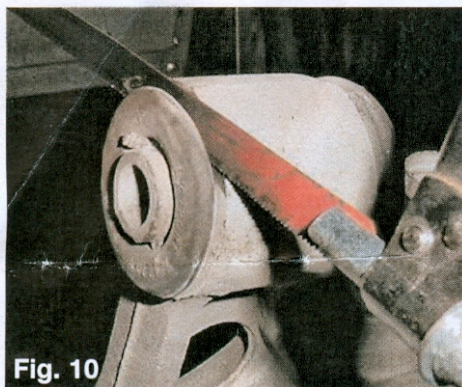


Fig. 10

You will need to cut the rubber flange off of the rear part of the bushings.



Fig. 11

Take off the flange. We used pliers to pull the rest of the rubber off.

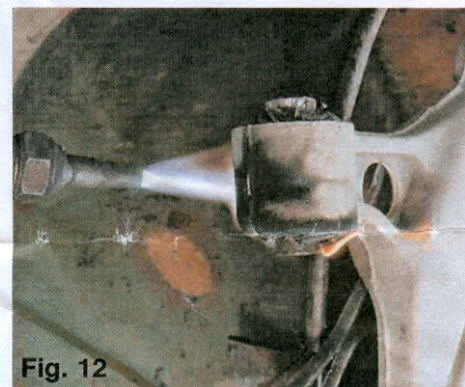


Fig. 12

Now it is time to remove the rubber bushings. You can use a drill and drill out the rubber. Or do it this easy way.

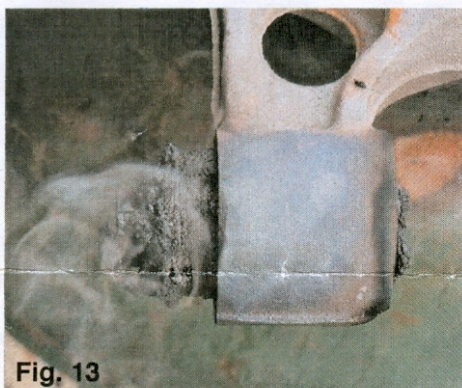


Fig. 13

Heat slowly all the way around the outside of the bushing shell, see fig.13. The rubber will heat up, swell and squeeze out.

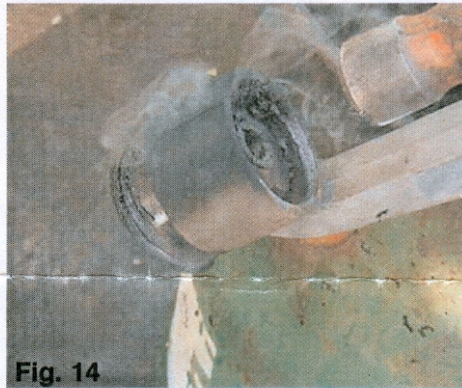


Fig. 14

The bushing in fig.13 shows it coming out of it's shell! NOTE use a galvanized bucket, gravel area, or use some kind of protection. This process can make a mess so be prepared.



Fig. 15

Now do the same thing to the rest of the bushings. Tip: After you heat up the outside area, you can use something to tap on the bushing to help it out of the a-arm.



Fig. 16

Next step is to clean-up your a-arms. Cleaner, solvent, sand, paint...what ever steps you want. Then add your new polyurethane PolyBushings.



Fig. 17

After you clean up the a-arms, slide in the polyurethane bushings. Then the inner sleeve. Make sure you add the green PolyLube to the inner sleeve before you push it into the bushings.



Fig. 18

Lube the outer parts of the bushing. Add a-arm back into k-frame. Install bolts and tighten all hardware. Re-install ball joint to hub, re-install sway bar. Make sure all hardware is tightened.

www.PolyBushings.com
P.O. Box 4283
Coos Bay, Oregon 97420
(541) 266-0890